

CORRECTION

Open Access



Correction: FOXC1-mediated LINC00301 facilitates tumor progression and triggers an immune-suppressing microenvironment in non-small cell lung cancer by regulating the HIF1 α pathway

Cheng-Cao Sun^{1,2*}, Wei Zhu^{1†}, Shu-Jun Li^{3†}, Wei Hu¹, Jian Zhang¹, Yue Zhuo¹, Han Zhang¹, Juan Wang¹, Yu Zhang¹, Shao-Xin Huang⁴, Qi-Qiang He¹ and De-Jia Li¹

Correction: *Genome Med* 12, 77 (2020)

<https://doi.org/10.1186/s13073-020-00773-y>

The original publication of this article [1] contained the following errors:

1. Figures 2 & 9 & S9 were mislabeled.
2. There was a wrong description for Fig. 9E. Due to the error, the Y axis in left and right panel of Fig. 9E should be “Cell viabilities”, but it was written as “Cell viability”. The statistical analysis for Fig. S9B-E was added and presented in Fig. S9F.

The old and new figures are shown in this correction article as Figs. 1(Original/incorrect Fig. 2), 2 (Correct Fig. 2), 3 (Original/incorrect Fig. 9), 4 (Correct Fig. 9), 5 (Original/incorrect Fig. S9), and 6 (Correct Fig. S9). The original article has been updated. The authors declare that this does not affect the results and conclusion of the publication.

Published online: 12 April 2023

[†]Cheng-Cao Sun, Wei Zhu and Shu-Jun Li contributed equally to this work.

The original article can be found online at <https://doi.org/10.1186/s13073-020-00773-y>.

*Correspondence:

Cheng-Cao Sun
chengcaosun@whu.edu.cn

¹ Department of Preventive Medicine, School of Health Sciences, Wuhan University, No.115 Donghu Road, Wuchang District, Wuhan 430071, Hubei, People's Republic of China

² Department of Molecular and Cellular Oncology, The University of Texas MD Anderson Cancer Center, Houston, TX 77030, USA

³ Wuhan Hospital for the Prevention and Treatment of Occupational Diseases, Wuhan 430022, Hubei, People's Republic of China

⁴ School of Basic Medicine, Jiujiang University, Jiujiang 332005, Jiangxi, People's Republic of China

Reference

1. Sun C-C, et al. FOXC1-mediated LINC00301 facilitates tumor progression and triggers an immune-suppressing microenvironment in non-small cell lung cancer by regulating the HIF1 α pathway. *Genome Med.* 2020;12:77. <https://doi.org/10.1186/s13073-020-00773-y>.



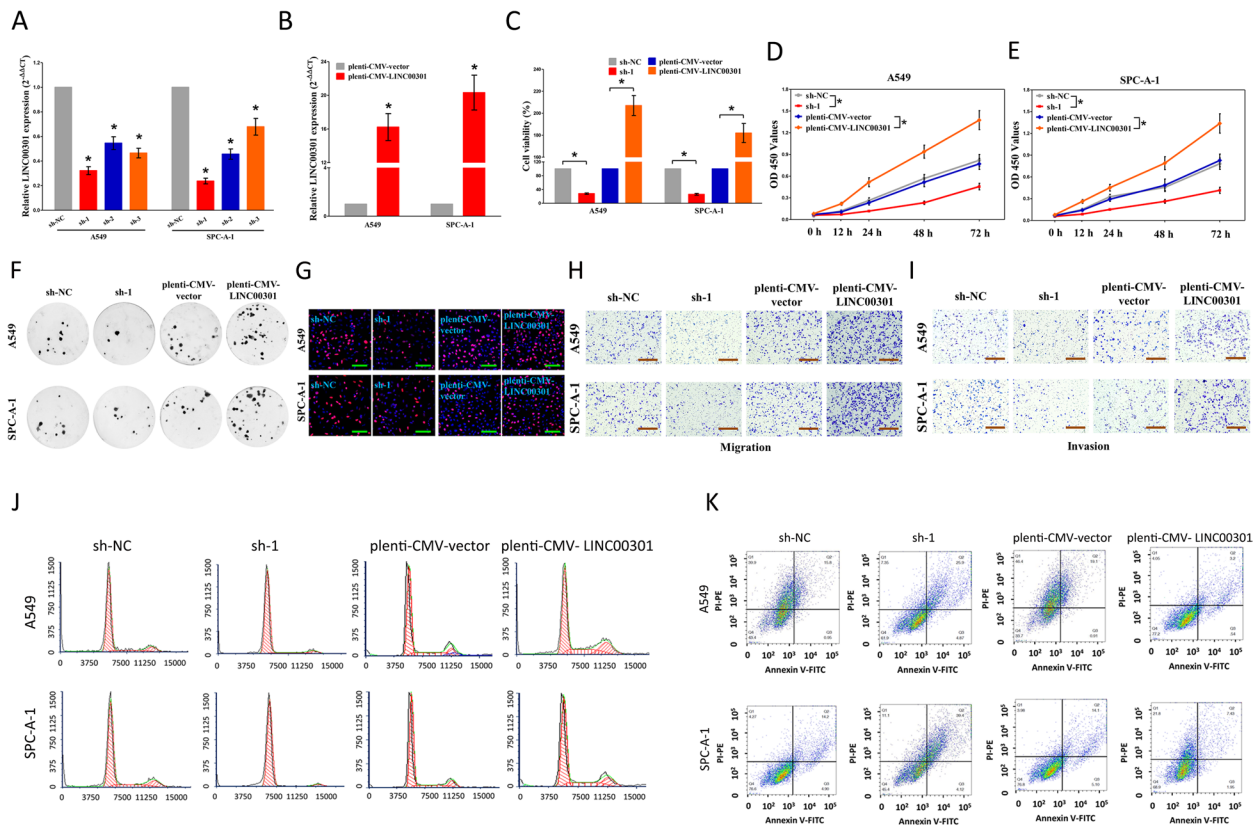


Fig. 1 Original (incorrect) version of figure 2

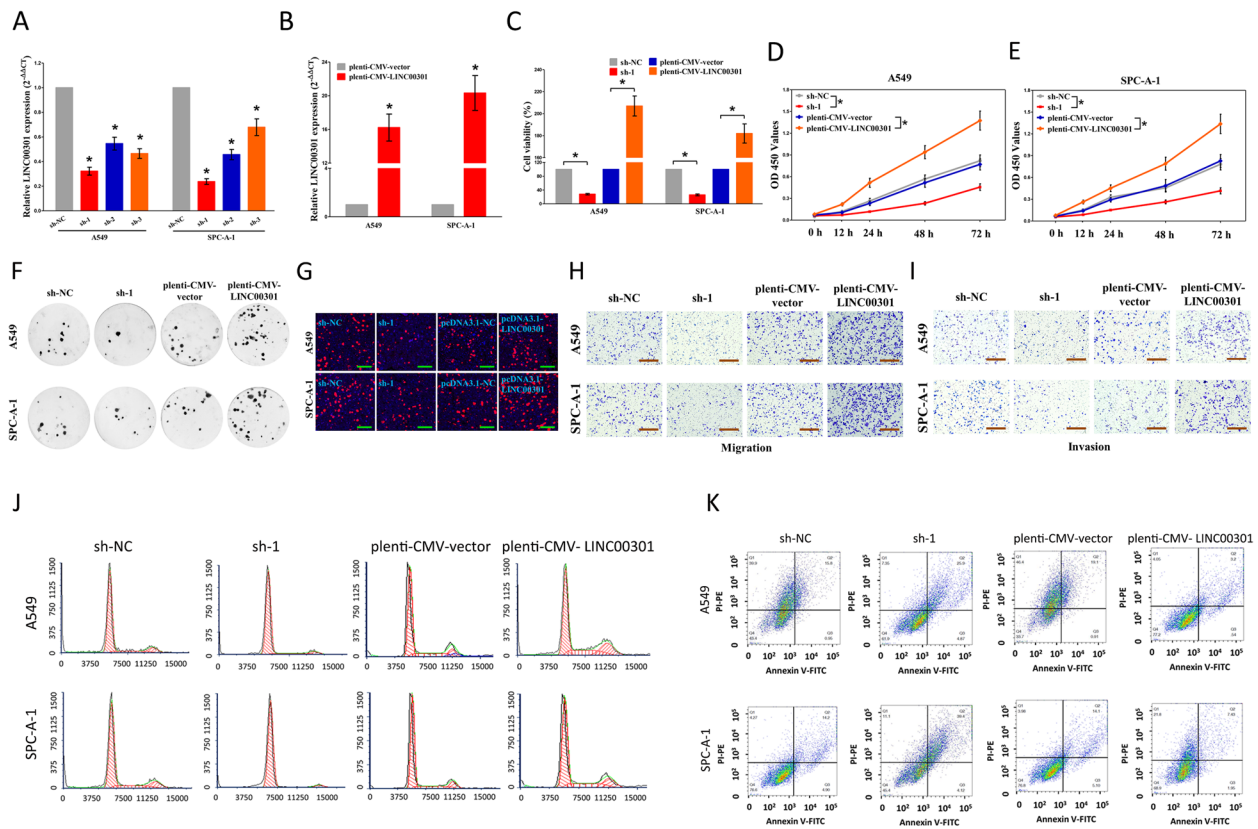


Fig. 2 Correct version of figure 2

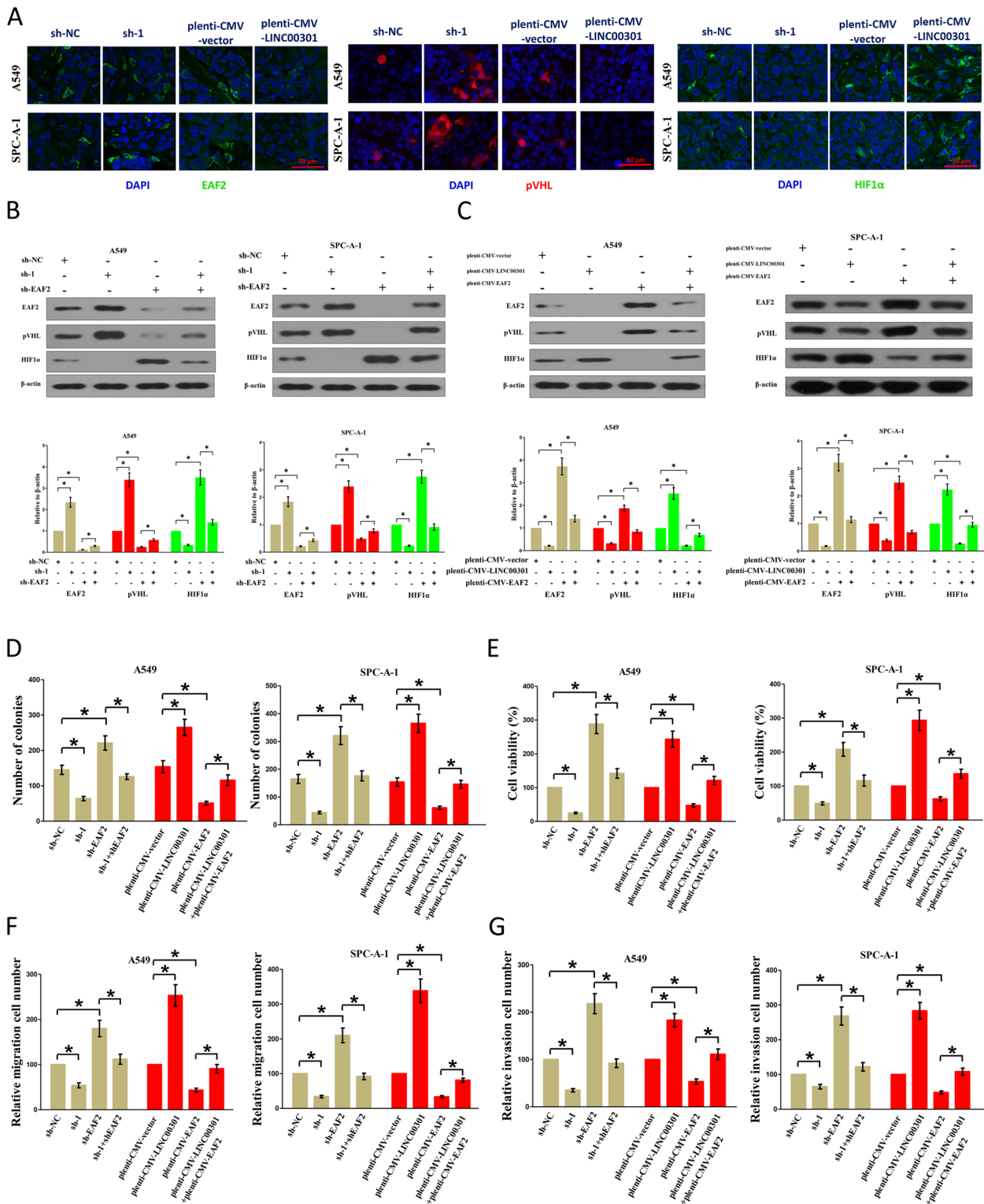


Fig. 3 Original (incorrect) version of figure 9

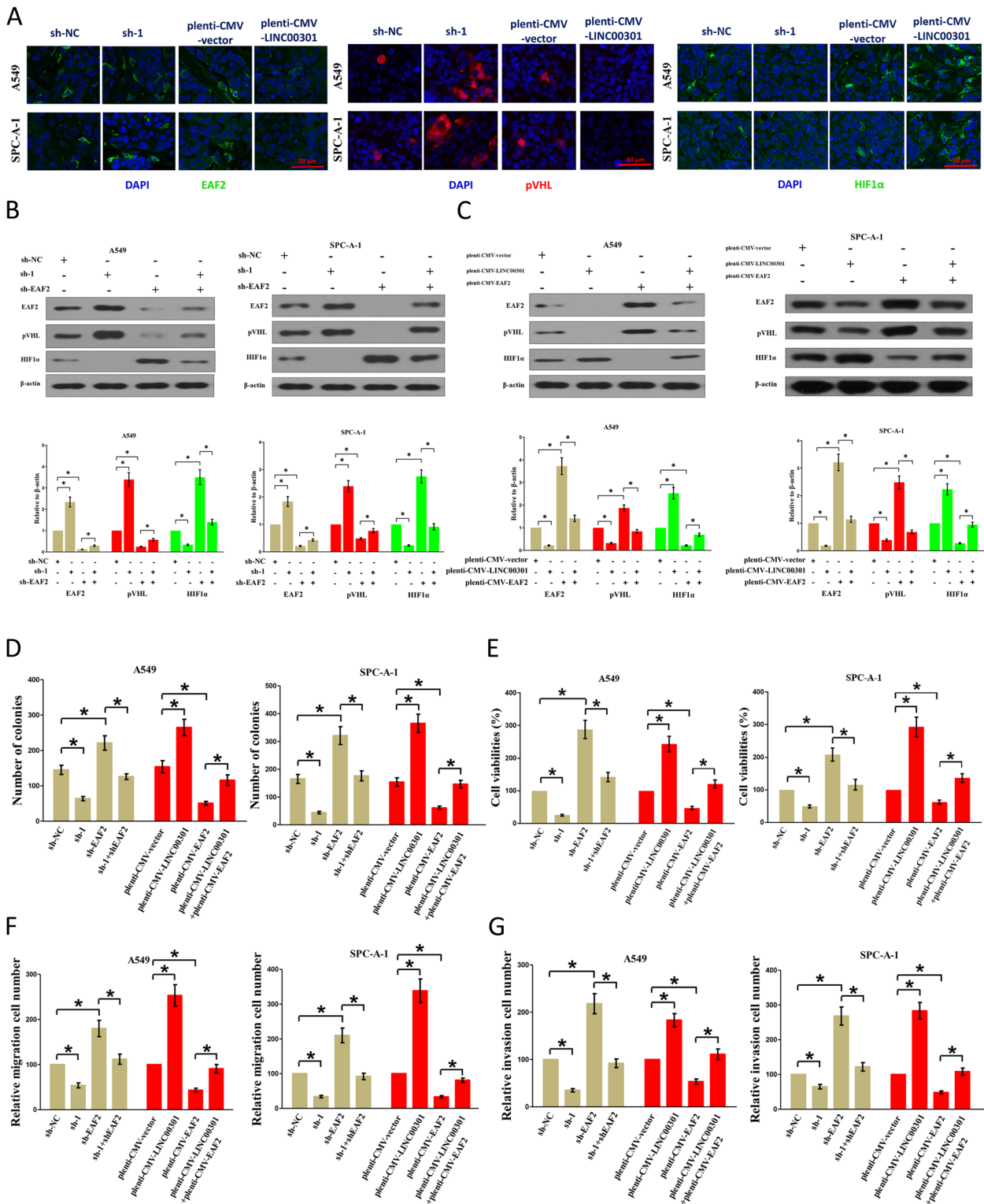


Fig. 4 Correct version of figure 9

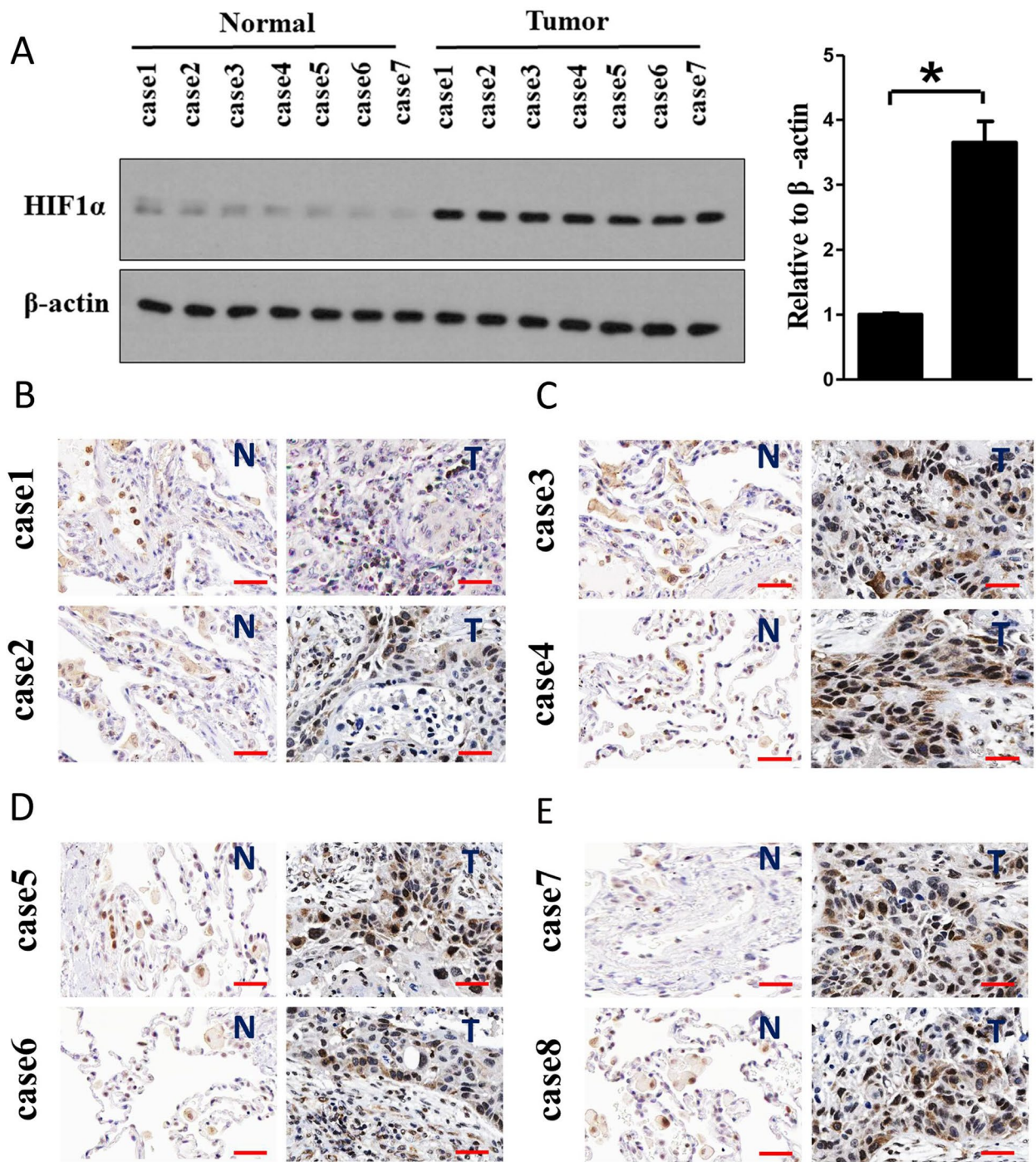


Fig. 5 Original (incorrect) version of figure S9

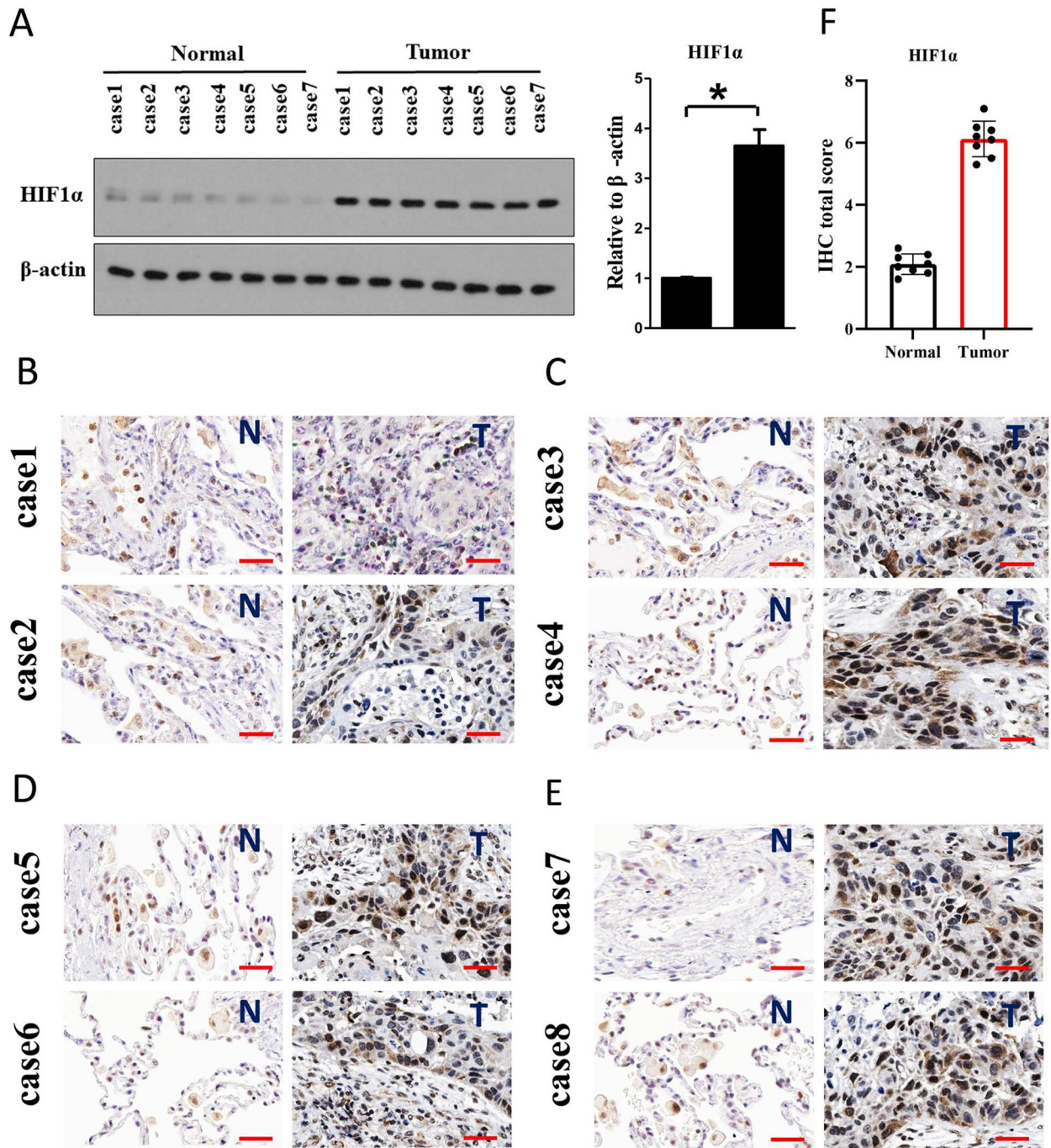


Fig. 6 Correct version of figure S9